

4

3

2

1

BCS 5100

PUNCH BLOCK DIAGRAM

PB

SIZE	DWG NO.	
C	573-043	

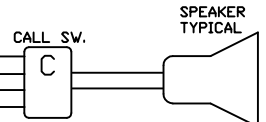
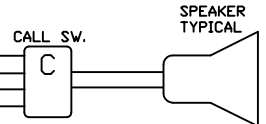
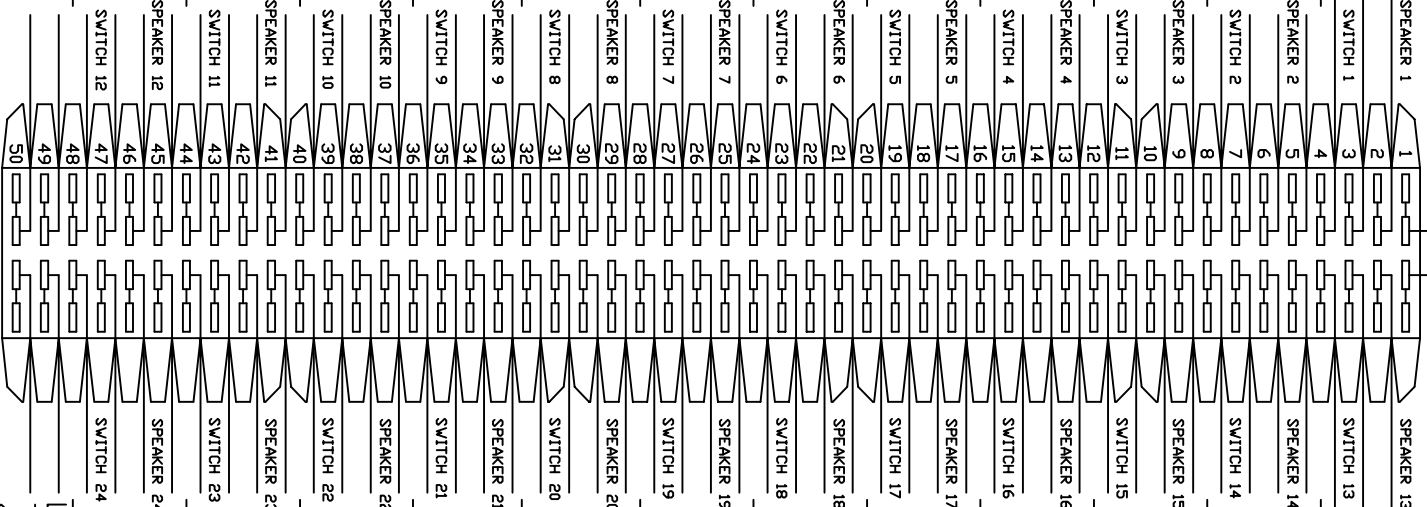
DEVICE DESCRIPTION: PUNCH DOWN BLOCK 5120-9920
 INPUT FROM: 24 POINT STATION BOARD #1 5130-9142
 OUTPUT TO: STATIONS 1-24

D

D

STATION 12 STATION 11 STATION 10 STATION 9 STATION 8 STATION 7 STATION 6 STATION 5 STATION 4 STATION 3 STATION 2 STATION 1

LINE LEVEL OUT
 TO AMPLIFIED
 SPEAKER ZONE



LINE LEVEL OUT
 TO AMPLIFIED
 SPEAKER ZONE

STATION 24 STATION 23 STATION 22 STATION 21 STATION 20 STATION 19 STATION 18 STATION 17 STATION 16 STATION 15 STATION 14 STATION 13

A

A

RECOMMENDED FIELD WIRING: 20-24 AWG SOLID COPPER; TWISTED PAIRS
 SEE 573-047 (SYSTEM DETAILS) FOR EXACT WIRING SPECIFICATION.

Simplex
 ©SIMPLEX TIME RECORDER CO., GARDNER, MA.

TITLE	PUNCH BLOCK DIAGRAMS	
EQUIP	5100 SERIES - CHAPTER 2	
SIZE	DWG NO.	SHT
C	573-043	25B

4

3

2

1