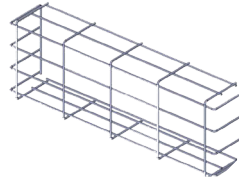


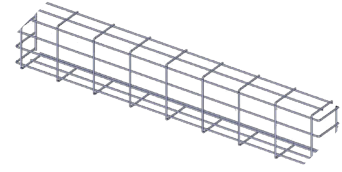
Technical Specifications

V-WGVL520-2/V-WGVL550-2 Wire Guard

- Provides maximum protection for clocks
- Wire frame: heavy 3 gauge steel rods, welded together
- Zinc-plated, lacquered-baked clear coat finish
- Nylon cable clamps for mounting
- Packaged in sets of two (2)



use with VL520-F
Speaker-with-Text



use with VL550-F
Speaker with Text

Description:

The V-WGVL520-2/V-WGVL550-2 Wire Guard is designed provide maximum protection to Valcom's IP Speaker-with-Text. The V-WGVL520-2/V-WGVL550-2 are used in high damage areas where vandalism or accidental damage can occur.

SPECIFICATIONS

ENVIRONMENT

Indoor or outdoor use (Indoor use only with the speaker)

HOUSING AND FINISH

Heavy 3 gauge wire construction
Zinc-plated, lacquered-baked clear coat finish

MOUNTING

6 nylon cable clamps for mounting to wall
(Hardware to attach the clamps not included)

DIMENSIONS AND WEIGHT

V-WGVL520-2

Inside Dimensions

22.90in L x 7.20in H x 4.00in D
(58.20cm x 18.30cm x 10.20cm)

Weight: 2.50lbs (1.13kg)

Shipping Weight: 11.00lbs (4.95kg) 2 per box

V-WGVL550-2

Inside Dimensions

44.50in L x 7.20in H x 4.00in D
(113.00cm x 18.30cm x 10.20cm)

Weight: 4.40bs (2.00kg)

Shipping Weight: 11.00lbs (4.95kg) 2 per box

ARCHITECTS AND ENGINEERS

The Wire Guard, model V-WGVL520-2/V-WGVL550-2, shall provide maximum protection for Valcom's IP Speaker-with-Text. The V-WGVL520-2 shall be used with VL520-F and the V-WGVL550-2 shall be used with VL550-F. The wire guard shall be constructed of heavy 3 gauge steel rods welded together with a zinc-plated, lacquered-baked clear coat finish.

The V-WGVL520-2/V-WGVL550-2 Wire Guards shall include nylon cable clamps for mounting the guard to the wall. Six clamps shall be included with the V-WGVL520 and eight clamps shall be included with the V-WGVL550. The clamp shall accept up to a size #10 screw (0.20in). Hardware to mount the clamps to the wall is not included. The Wire Guard shall be packaged in sets of two.

The Wire Guard shall be suitable for indoor/outdoor applications (indoor use only with speaker).

V-WGVL520-2 maximum inside dimensions shall be: 22.90in L x 7.20in H x 4.00in D (58.20cm x 18.30cm x 10.20cm). Weight shall be approximately: 2.50lbs (3.20kg).

V-WGVL550-2 maximum inside dimensions shall be 44.50in L x 7.20in H x 4.00in D (113.00cm x 18.30cm x 10.20cm). Weight shall be approximately: 4.40lbs (1.10kg).

Warranty information may be found on our website at www.valcom.com/warranty.

2022 Rev 1.8.28