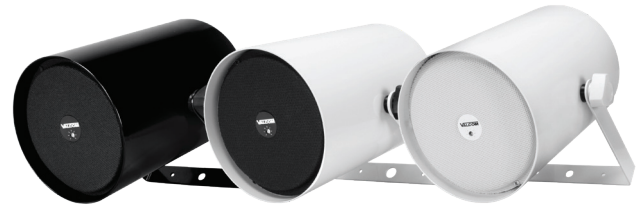


Technical Specifications

V-1014B Track-Style Speaker

- One-way paging
- Omni-directional mounting
- High-fidelity full range speaker
- Quick and easy installation
- Available in black (-BK), gray (-GY) or white (-W) high gloss finishes
- Indoor use only



*Self-amplified one-way
5-Watt*

Description:

The V-1014B is a fashionable 5-Watt One-Way Track-Style Speaker that is the perfect choice for providing high quality voice paging and background music. The contemporary look blends well with modern architecture and is ideal for retail stores, restaurants, offices and covered patio environments. The V-1014B includes a mounting bracket for quick and easy installation on wall or ceiling.

SPECIFICATIONS

SPEAKER ELEMENT

Cone Diameter: 5.00in (12.70cm)
Voice Coil Impedance: 8 Ohms

INPUT

Impedance: > 600 Ohms nominal
Signal Level: -10 dBm line level

OUTPUT

Rating: > 100 dB @ 4ft (1.22m)

POWER REQUIREMENTS

300 mA @ -24 Vdc

FREQUENCY RESPONSE

70 Hz to 16 kHz

MAGNET

Cone type with 5oz (142g) ceramic magnet

ENVIRONMENT

Temperature: -4 to +131°F (-20 to +55°C)
Humidity: 0 to 95% non-condensing

HOUSING AND FINISH

Aluminum tube construction with white, black or gray powder coat finish.

DIMENSIONS AND WEIGHT

8.80in L x 5.80in Dia
(22.35cm x 14.73cm)
Weight: 3.10lbs (1.40kg)
Shipping Weight: 7.60lbs (3.42kg)

2022 Rev. 7.7.18

Technical Specifications

ARCHITECTS AND ENGINEERS

The Track-Style Speaker, model V-1014B, shall include a speaker, amplifier, externally accessible volume controls and mounting bracket.

The V-1014B Track-Style Speaker frequency response shall be 70 Hz to 16 kHz. The output shall be 100 dB at 4ft (1.22m).

The V-1014B Track-Style Speaker amplifier shall operate on a -24 Vdc nominal, positive ground power supply. Operating current shall be 300 mA at -24 Vdc. Operating temperature shall be -4 to +131 °F (-20 to +55 °C). Humidity range shall be 0-95%, non-condensing.

The V-1014B Track-Style Speaker shall be constructed of aluminum tubing and finished in white, gray or black epoxy powder coat paint. The V-1014B speaker shall have an externally accessible volume controls that is adjustable by a screwdriver through the hole in the grille. V-1014B shall be suitable for indoor applications.

The maximum dimensions shall be: 8.80in L x 5.80in Dia (22.35cm x 14.73cm) . Weight shall be approximately: 3.10lbs (1.40kg)

Warranty information may be found on our website at www.valcom.com/warranty.