

V-2972 CALL SWITCH

INTRODUCTION

The V-2972 Call Switch was designed to be used with Talkback Page Control Units with the remote calling feature. The V-2972 provides a momentary spring return rocker switch for connection to customer provided signaling equipment.

DIMENSIONS/WEIGHT

- 4.50" H x 2.75" W x 1.50" D
(11.43cm H x 6.99cm W x 3.81cm D)
- 0.2 lbs. (.09 kg)

FEATURES

- Designed to fit in a standard single-gang electrical box.
- No external power source required.
- White "Call" button for normal call.
- Satin finished one-gang stainless steel plate.

CONNECTIONS/SETUP

1. Connect switch inputs from control unit to V-2972 as shown in connection diagram.
2. Connections are made by factory supplied 3 inch insulated pigtailed that connect to push-on style terminals.
3. Place V-2972 over standard single-gang electrical box with minimum depth of 2 inches and fasten in place using the two #6-32 screws provided.



TECHNICAL ASSISTANCE

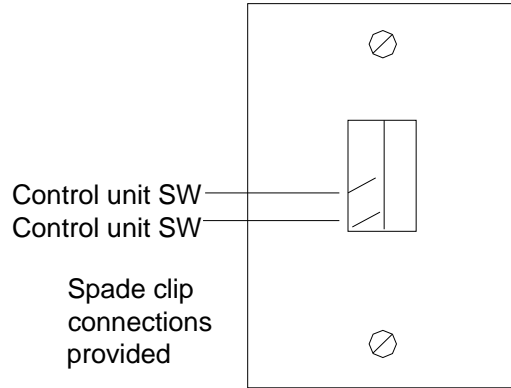
When trouble is reported, verify that there are no shorts or grounds on cabling.

Assistance in troubleshooting is available from the factory. When calling, you should have a VOM, a telephone test set available and call from the job site. Call (540) 563-2000 and press 1 for Technical Support or visit our website at <http://www.valcom.com>.

Valcom equipment is not field repairable. Valcom, Inc. maintains service facilities in Roanoke, VA. Should repairs be necessary, attach a tag to the unit clearly stating company name, address, phone number, contact person and the nature of the problem. Send the unit to:

**Valcom, Inc.
Repair and Return Dept.
5614 Hollins Road
Roanoke, VA 24019-5056**

**V-2972 Connections
(Rear View)**



WARRANTY

Warranty information may be found on our website at www.valcom.com/warranty.