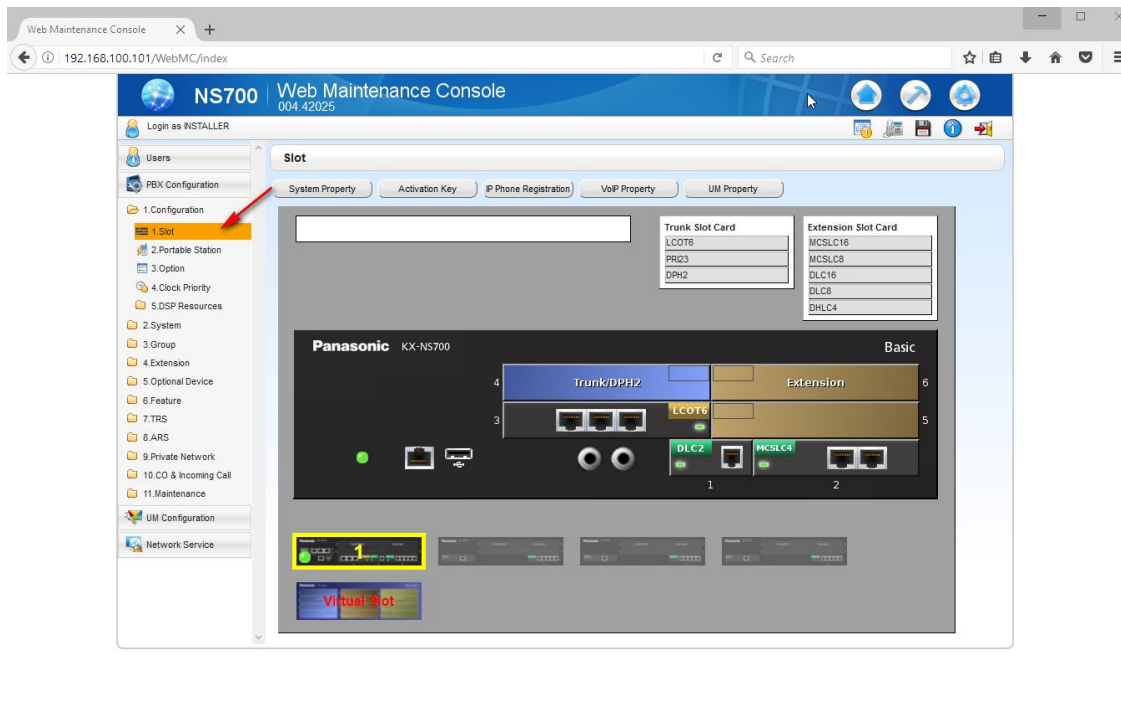


Valcom Session Initiation Protocol (SIP) VIP devices are compatible with the Panasonic Unified Communications Platform. The Valcom device is added to the Panasonic as a standard SIP extension (generic SIP phone).

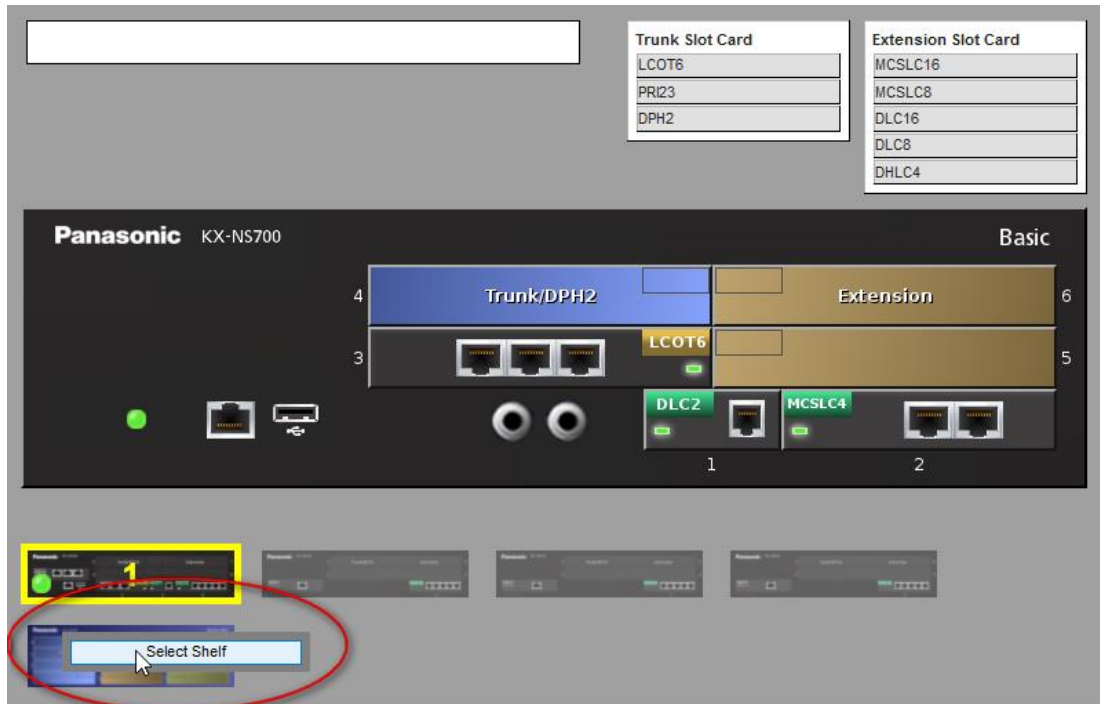
The configuration example in this document is based on a Panasonic KX-NS700 software version 4.42025 and a Valcom IP speaker. This example should be similar for any other Panasonic IP PBX in the Unified Communications Platform.

The following steps outline the typical configuration process:

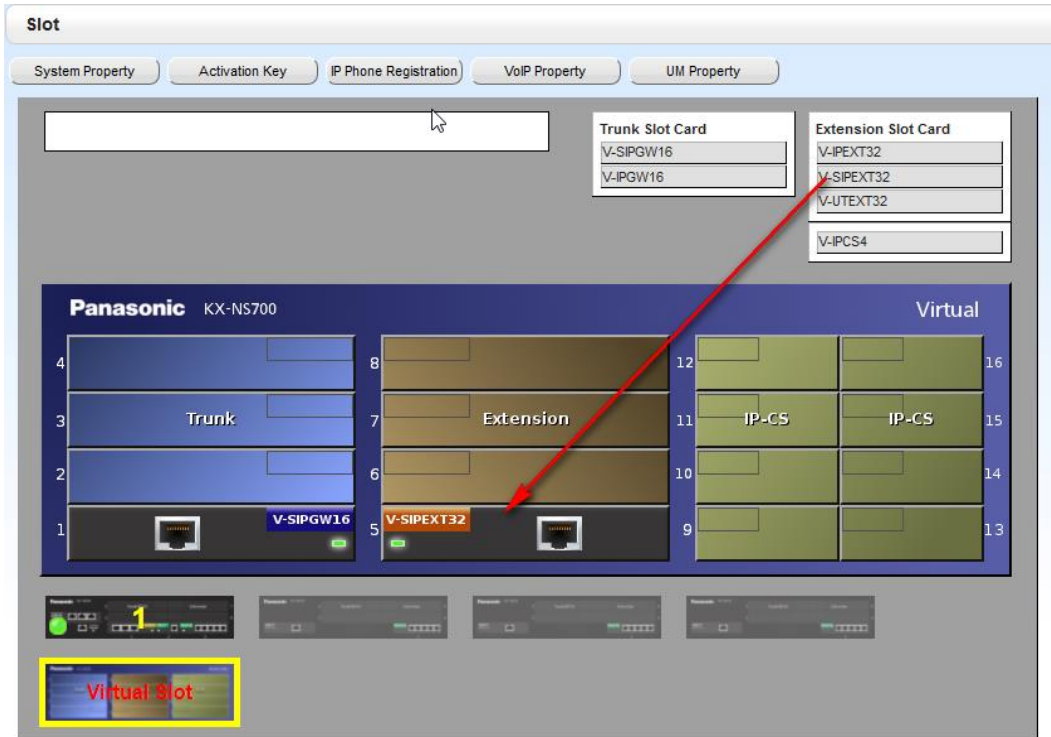
1. Open the Web Management console for the Panasonic PBX via a web browser using the IP address of the PBX and login as INSTALLER.
2. The PBX Configuration/Slot screen should display by default.



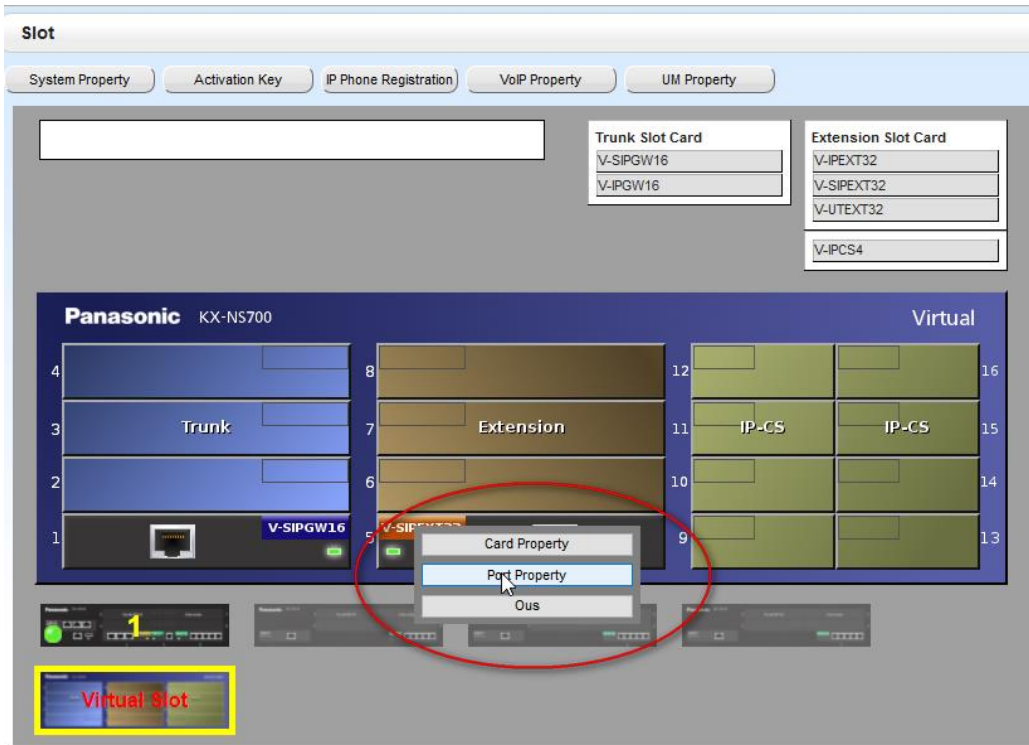
3. Hover the mouse over the Virtual Slot and click on Select Shelf.



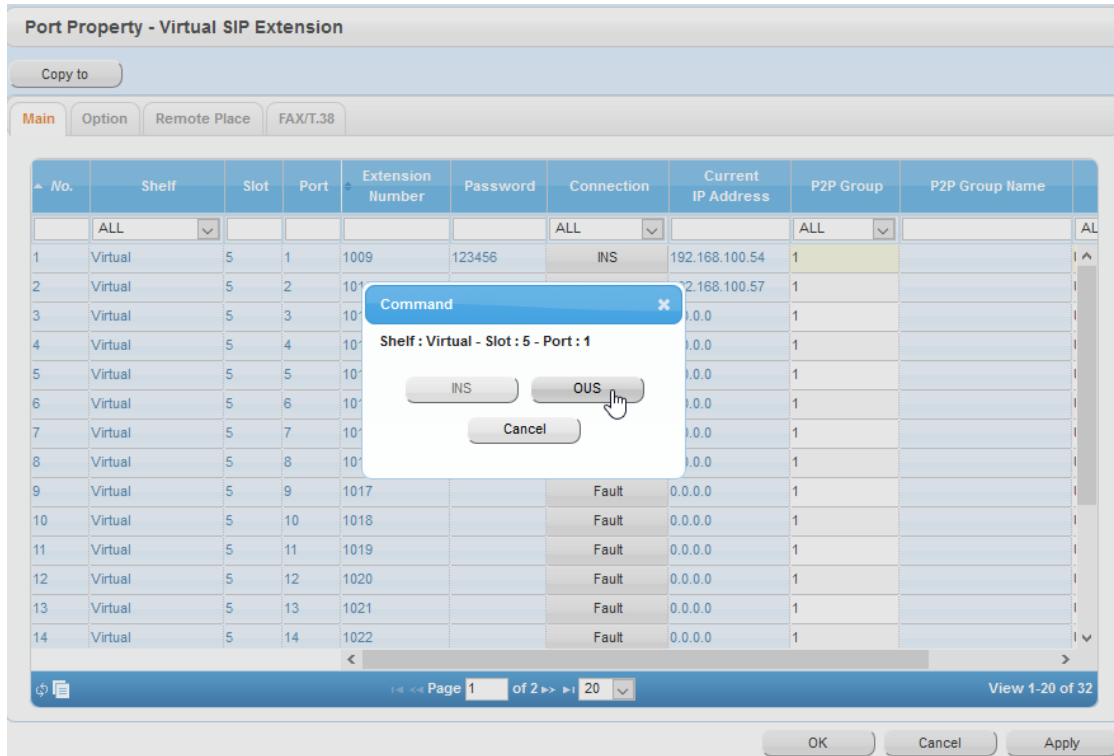
4. Virtual Slot screen should display and have at least 1 V-SIPEXT32 Extension Slot Card.
If not, drag and drop one from the Extension Slot card window into the next available extension Slot.



5. Hover the mouse over the V-SIPEXT32 card and click on Port Property.



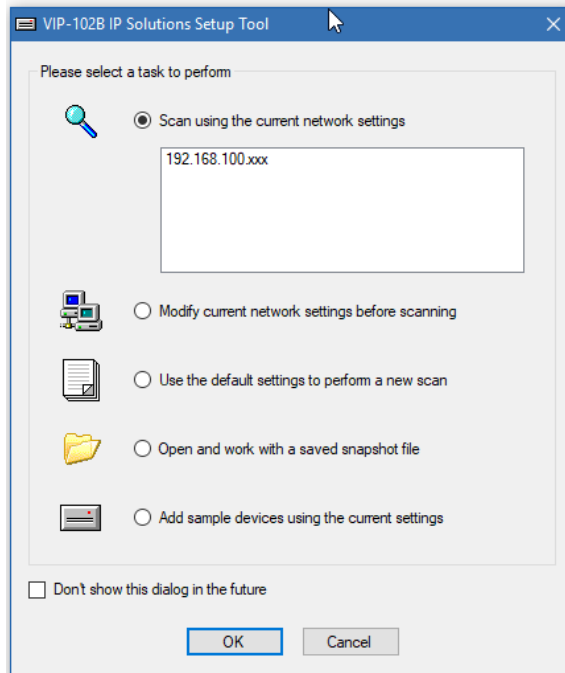
6. If automatic extension numbering is enabled the available extensions to use will be listed, so you can the select an unused extension and click on that row's Connection field. On the Command popup window, click OUS to take the port out of service.



- With the port out of service, the password field becomes editable. Key in a password to be used for this extension.

No.	Shelf	Slot	Port	Extension Number	Password	Connection	Current IP Address	P2P Group	P2P Group Name
1	Virtual	5	1	1009	123456	OUS	192.168.100.54	1	

- Click Apply button on the screen at the lower right and leave the web browser on this screen as you will need to return here later.
- At this point we can now configure the speaker in the VIP-102B tool. If you do not have it, you can download the tool from our website at <http://www.valcom.com/vipsetuptool>.
- After installing the VIP-102B tool, launch it and select "Scan using the current network settings" if you have already predefined the subnet the VIP device is on. Otherwise if you are on the same subnet you can select "Use the default settings to perform a new scan". Then click OK to start the scan.



11. If successful, the device should appear in the discovery window. Click Continue.
12. If you need to assign an IP address to this device or set it to DHCP refer to the VIP-102B Reference manual on our website <http://www.valcom.com/vipsetuptool> .
13. After assigning the IP address and rescan there will be additional tabs to program. Specifically for this example with the IP speaker we will focus on the SIP tab to enable the device to register as the SIP extension created on Panasonic IP PBX.

Summary Properties Network Time Talkback Channels Inputs Relays Group Membership SIP

1

Extension

Phone Number: 1009

Description:

Authentication Name:

Secret: 123456 Password

Realm:

SIP Servers:

	Server	Port
Primary	192.168.100.101 Panasonic PBX	5060
Backup 1		5060
Backup 2		5060
Backup 3		5060

Register: DNS SRV:

Outbound Proxy: Outbound Port: 5060

SIP Port: 5060 Idle Timeout (secs): 0

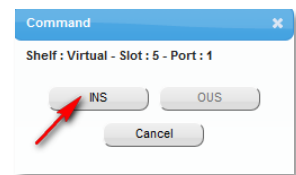
RTP Port: 20000 Max Call Timer (secs): 0

CID Number: 1009 CID Name:

Defaults Copy Apply Cancel

Phone Number=PBX Extension
Secret =Extension's Password
Server =IP address of PBX

- After keying in the necessary fields, click the Apply button at the bottom then click on the icon to update, then when prompted for Reset, click Yes.
- After a few minutes go back to the Panasonic Web management Console in the web browser. You should be at the Virtual SIP Extension screen you were at previously. If not, the go to the main PBX Configuration/Slot screen. Select Virtual Slot as in step 3, then step 5.
- Click on the Connection cell for this extension. On the Command popup window, click INS to put it in service. If successful the device will be registered otherwise it will display fault. If fault, make sure the password is correct from what was entered in step 7.





*Panasonic Unified Communications
Platform SIP Extension Configuration
Guide*
