

Valcom Session Initiation Protocol (SIP) VIP devices are compatible with Asterisk SIP PBX Systems. The Valcom device is added to the Asterisk PBX as a standard SIP extension (generic SIP phone).

The following steps outline the typical configuration process:

1. Login via shell (SSH, console login, etc.) to your Asterisk SIP Server.
2. As root, change directories to your Asterisk configuration file directory.

Example: asteriskhost:~/# **cd /etc/asterisk**

3. Edit the SIP configuration file: sip.conf

*The following is an example of a typical Asterisk VIP device sip.conf configuration.
(The number 9993 should be changed to fit your dial code structure)*

```
[9993] ; -example user is: 9993
type=friend
secret=password ; -example password: password
nat=yes
host=dynamic
canreinvite=yes
username=9993 ; -example user is: 9993
rfc2833compensate=yes
```

4. Edit the SIP extension configuration file: extensions.conf

*The following is an example of a typical Asterisk VIP device extensions.conf configuration.
(The number 9993 should be changed to fit your dial code structure)*

```
; Extension 9993 - Valcom VIP-172L
exten => 9993,1,Dial,sip/9993|30|to
```

5. Restart the Asterisk service.

Example: asteriskhost:/etc/asterisk/# **/etc/init.d/asterisk restart**

6. Open the VIP-102B tool interface for the Valcom SIP enabled VIP device.

Note: The information contained in this guide is limited to configuration of the "SIP" tab in the VIP-102B IP Solutions Setup Tool for the Valcom VIP device that is to be registered to the SIP server. More information on Valcom VIP device configuration, such as IP address assignment, relay activation, etc, may be found in the VIP-102B Reference Manual. This document may be downloaded from our website at <http://www.valcom.com>

Required Fields: Phone Number, Secret, SIP Server, Register, SIP Server Port, SIP Port, RTP Port, Auto Destination
Optional Fields: Authentication Name, CID Name, CID Number

*In our example, the SIP Server IP address is the same as our Asterisk SIP PBX, "192.168.96.235".
Phone Number is the same as our Username in the Asterisk configuration, "9993".*

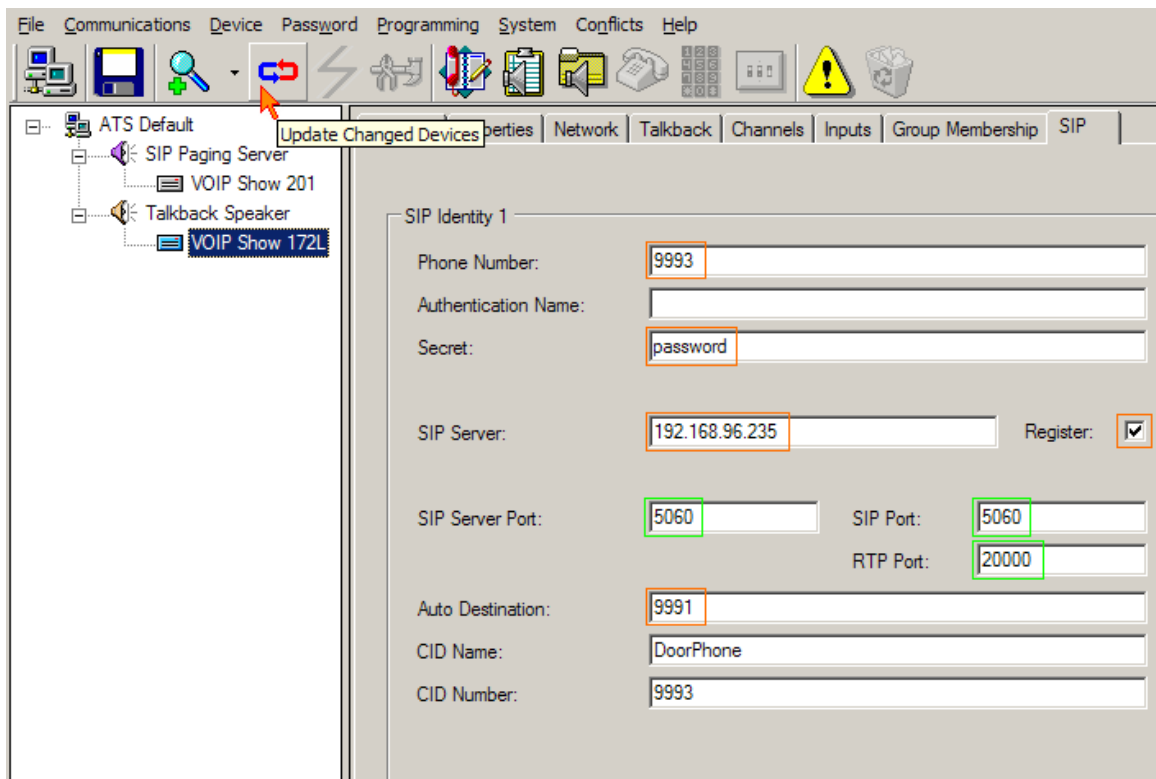
Secret is the same as our Secret in the Asterisk configuration, "password".

SIP Server Port is the port number, on which the Asterisk server is listening for SIP data.

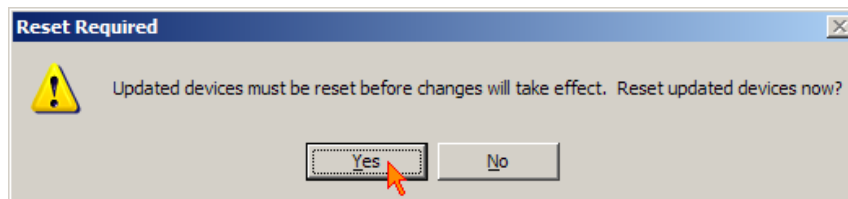
SIP Port is the port number, on which the Valcom VIP device is listening for SIP data. By default this is set for "5060".

RTP Port is the port number, on which the Valcom VIP device is set to send/receive audio packets. By default this is set for "20000".

When the Valcom VIP device configuration is complete, select the "Update Changed Devices" button, at the upper left.



7. After updating your VIP device, you will be prompted to reset your device. Select "Yes".



8. Ensure that Asterisk restarted properly and that your extensions are up.

(The following line is a successful registration to a Debian (Lenny 5.0.2) Asterisk PBX, as seen in /var/log/asterisk/messages.)

```
[Aug 01 15:46:09] NOTICE[3708] chan_sip.c: Peer '9993' is now Reachable. (50ms / 200ms)
```